



Lung Cancer Screening with CT

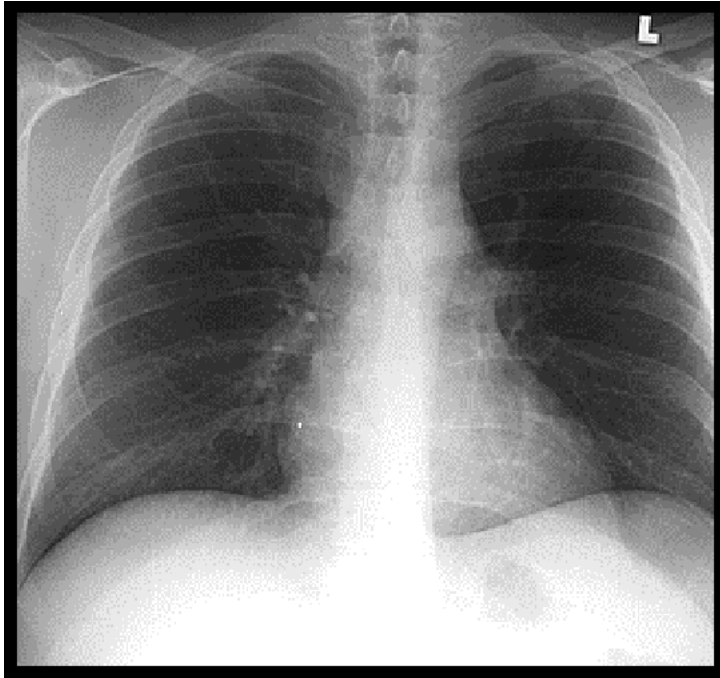


Figure 1: **CHEST X-RAY**

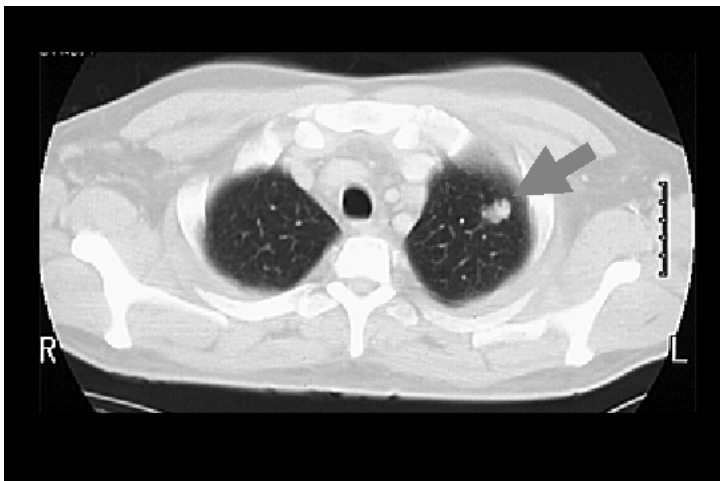


Figure 2: **LOW DOSE CT SCAN OF SAME PATIENT**

CASE DISCUSSION

A 56-year-old male ex-smoker was concerned about his increased risk of having lung cancer. He had smoked one pack of cigarettes a day for 20 years. He had no signs or symptoms of poor lung health. His routine x-ray appeared normal (Figure 1).

To alleviate his anxiety, his physician referred him for a Lung Cancer Screening CT. The CT scan indicated a nodule in the left upper lobe (Figure 2).

DIAGNOSIS & TREATMENT

The diagnosis was Stage 1 resectable (operable) lung cancer without metastasis.

The patient underwent VATS (Video-Assisted Thoracic Surgery). The nodule in the left upper lobe was removed. There were no complications.

The patient is alive and well.

FURTHER INFORMATION

To discuss Lung Cancer Screening with CT and its clinical ramifications, call University Radiology at 732-390-0040 and ask for Dr. Amorosa or Dr. Bramwit. Or e-mail them at amorosa@umdnj.edu.

For a copy of the articles that support this study, call University Radiology at 732-390-0040, ext 2500.